

IIDA

ne

DESIGN AWARDS

11TH ANNUAL CELEBRATION

I I D A
INTERNATIONAL
INTERIOR DESIGN
ASSOCIATION
NEW ENGLAND CHAPTER

CONTENT

**Always keep your eyes
open. Keep watching.
Because whatever you
see can inspire you.**

- GRACE CODDINGTON, *CREATIVE DIRECTOR / EDITOR / MODEL*

ITS

LETTERS FROM IIDA EXECUTIVE VICE PRESIDENT & CEO, IIDA NE PRESIDENT AND CO-CHAIR WELCOME	06
<hr/>	
IIDANE BOARD MEMBERS & CHAPTER SPONSORS	13
<hr/>	
NON-PROFIT BENEFICIARY	20
<hr/>	
2018 DESIGN AWARDS COMMITTEE	24
<hr/>	
AWARD JUDGES	29
<hr/>	
PROJECT CATEGORIES	
Graduate Design.....	35
Undergraduate Design.....	39
Building Repositioning & Building Amenities.....	49
Community & Culture.....	53
Education.....	57
Healthcare.....	63
Hospitality: Hotel/Lodging.....	67
Hospitality: Restaurant/Retail.....	71
Research Lab.....	77
Residential: Private.....	81
Residential: Multi-Unit.....	85
Senior Living.....	89
Student Housing.....	93
Workspace Under 20,000SF.....	97
Workspace 20,000-80,000SF.....	103
Workspace Over 80,000SF.....	109
Workspace on a Budget.....	115
<hr/>	
UPCOMING EVENTS	118

A modern office desk and chair in a large room with a big window. The desk is dark grey with a light wood top and dark wood legs. The chair is black with a brown seat and backrest. The room has a large window with a view of trees and buildings. The floor is made of concrete.

Senator

Let's work together.

A photograph of a modern office desk and chair in a rustic setting. The desk is a light-colored wood with dark legs, and the chair is a brown mesh office chair. A large window in the background shows a cityscape. The text 'workflow' is in the top right, and 'A dealership built on service' is below it. In the bottom right, there are two website URLs: 'thesenatorgroup.com' and 'workflowinteriors.com'.

workflow

A dealership built on service

thesenatorgroup.com

workflowinteriors.com

Letter from the

IIDA EXECUTIVE VICE PRESIDENT AND CEO

On behalf of the International Board and Staff of the International Interior Design Association (IIDA), I'd like to welcome you to the 11th annual IIDA New England Chapter Design Awards.

For more than a decade, this chapter has honored its members during this signature event and ceremony, highlighting the incredible projects so expertly produced in this region. Tonight, we welcome more than 700 members — the largest gathering in the program's history — to celebrate the contributions each of you have made to this design community and to the world at large.

The New England Chapter aids in assembling, mobilizing, and elevating local design professionals, offering continuing education, advocacy, and networking opportunities to an engaged membership. Central to these activities is a



spirit of celebration, honoring the impactful, human-centric work that you create each and every day. A reflection of this core purpose, the Design Awards provide us with an opportunity to celebrate interior environments from across the region that bring people, place and purpose to the forefront.

This chapter and its members make a significant impact locally and globally through a dedication

to excellence and a passion for leveraging your design acumen to positively influence business, health, and humanity. I'd like to congratulate you for continuing to grow this program in submissions, attendance, and prestige, as it underscores your commitment to furthering the design profession in the region and beyond.

I sincerely respect and appreciate your enthusiasm for design, distinctive industry leadership, and steadfast support of IIDA. It is your expertise, creativity, and devotion to interior design that continues to carry the profession toward a vital, dynamic, distinctly human future.

Cheers,

Cheryl S. Durst

Honorary FIIDA, LEED AP
Executive Vice President + CEO
International Interior Design
Association



+ Positive spaces[™] pattern after nature

Let It Bee is like an algorithm for the floor – solving for scale, shape, form, pattern, variety, movement, texture and color – all in one.

Now that is a lot to be positive about.

+ Positive spaces

Better products. Happier people. Healthier planet.

Interface



OFFICEWORKS | teknon



Developing stunning furniture &
glass concepts through
sophisticated design &
superior customer service

www.officeworksinc.com | www.teknon.com



Letter from the
IIDA NE PRESIDENT



Welcome to the 2018 IIDA NE Design Awards! Taking time to recognize the boundless creativity of our IIDA members is one of the most important things we do each year.

Reminding ourselves and the public of the positive impact well-designed spaces can have on the people who encounter and use them has never been more important. As we celebrate the exceptional design work of our IIDA community we also remind ourselves that design is a team sport.

Gathered here tonight are not only designers but also clients, contractors, consultants, industry reps and dozens of other collaborators who were instrumental in realizing these amazing spaces.

While the photographs you'll see showcase their aesthetic beauty, I encourage you to visit as many of these projects as experiencing how these places feel and function affords an even deeper appreciation for the accomplishments of these design teams.

Congratulations to you all!

A handwritten signature in black ink, appearing to read 'Matthew Hyatt'.

Matthew Hyatt
AIA, IIDA, LEED AP BD+C
Principal
Bergmeyer





Be Inspired

NEMO
TILE + STONE

www.nemotile.com

for inquires contact:
Steven Wallace
swallace@nemotile.com

Welcome from your **CO-CHAIRS**



We are excited to welcome you to the 11th Annual IIDA New England Design Awards! It has been wonderful to get to know you through the design work you are producing. So in return, here is a little bit about us!

HOW WOULD YOU DESCRIBE YOUR CO-CHAIR IN ONE WORD?

Marcus: Thoughtful

Heather: Charismatic (+ just the greatest!)

WHAT WAS YOUR FIRST JOB?

Marcus: Papa Murphy's Take-n-Bake Pizza

Heather: Sullivan Farms Ice Cream Stand

ANY NICKNAMES?

Marcus: None. Never! Thanks!

Heather: Heath

WHO'S YOUR STYLE ICON?

Marcus: Tom Ford

Heather: Sienna Miller

FAVORITE DESIGN TRENDS AT THE MOMENT?

Marcus: Deep, jewel tone colors

Heather: Mixed materials and texture

FRIDAY NIGHT YOU CAN FIND ME...

Marcus: Out with my fabulous friends (you know who you are.)

Heather: Cuddled up on the couch with my family and BIG glass of red wine.

MOST LIKELY TO...

Marcus: Spill wine all over you. Oops! Sorry!

Heather: Not be able to make a decision

EVERY MEAL TASTE BETTER WITH?

Marcus: Cheese! (all the cheese)

Heather: Sweet potato fries! Or wine? (I told you I can't make a decision)

YOUR DRINK OF CHOICE?

Marcus: Espresso Martini

Heather: Tito's Dirty Martini

CURRENT TV ADDICTION?

Marcus: The Handmaid's Tale

Heather: Grace and Frankie

ANY ADVICE YOU WOULD GIVE A YOUNG DESIGNER?

Marcus: Do not be afraid to be vulnerable. Put your ideas out there. You don't grow and the world doesn't change by being like everybody else.

Heather: Fake it till you make it. Have the confidence to take risks and don't be afraid to trip up along the way. Learn from your mistakes and keep moving towards your goals. Oh, and network, network, network!

IIDA New England

2017-2018 BOARD OF DIRECTORS

IMMEDIATE PAST PRESIDENT

Paul Lewandowski, IIDA AIA
LEED AP NCARB
Lavallee | Brensinger Architects

PRESIDENT

Matthew Hyatt, AIA, IIDA, LEED
AP BD+C
Bergmeyer

PRESIDENT-ELECT

Stefanie Comeau, IIDA, LEED
AP ID+C
CBT Architects

VICE PRESIDENT OF PROFESSIONAL DEVELOPMENT

Gable Clarke, IIDA
SGA

VICE PRESIDENT OF MEMBERSHIP

Lisa DesJardins, Industry IIDA
Teknion, LLC

VICE PRESIDENT OF PHILANTHROPY

Anna Dockery, IIDA
Unispace

VICE PRESIDENT OF SPONSORSHIP

Kara Hanson, IIDA
Gensler

VICE PRESIDENT OF COMMUNICATIONS

Brittany Kane, IIDA
Colwen Design-XSS Hotels

VICE PRESIDENT OF ADVOCACY

Aimee Schefano, Associate IIDA
Symmes Maini &
McKee Associates

VICE PRESIDENT OF CHAPTER EVENTS

Mai Nguyen, Industry IIDA
Spinneybeck/Filzfelt

VICE PRESIDENT OF PROVIDENCE CITY CENTER

Meaghan Kennedy,
Associate IIDA
LLB Architects

VICE PRESIDENT OF HARTFOD CITY CENTER

Amanda Cleveland, IIDA
Silver/Petrucci + Associates

VICE PRESIDENT OF STUDENT AFFAIRS

Amanda Vicari, IIDA
SGA

CHAPTER ADMINISTRATOR

Jessica Bartram, CMP



SIENA

CONSTRUCTION | EST. 1991

-  GROUND-UP CONSTRUCTION
-  LIFE SCIENCES + BIOTECHNOLOGY
-  OFFICE + COMMERCIAL
-  ACADEMIC CAMPUSES
-  RESTAURANT + RETAIL
-  HISTORIC RESTORATION
-  COMMUNITY + PUBLIC SPACES

**BUILDING DYNAMIC SPACES
WHERE WE WORK, PLAY*,
LIVE, HEAL, AND CELEBRATE.**

**DICE NOT INCLUDED.*



SIENA.CONSTRUCTION.COM

	ALKERMES		GLAXO-SMITH-KLINE	FOUNDATION OF MEDICINE	 HARVARD UNIVERSITY	NOVARTIS	TAKEDA PHARMACEUTICALS	 WHITEHEAD INSTITUTE	ALNYLAM PHARMACEUTICALS	
INDIGO AGRICULTURE	<div style="text-align: center;">  <h1 style="color: green; font-size: 4em; transform: rotate(-30deg);">SIENA-OPOLY</h1>  </div>	AFFOA	LEGENDARY ENTERTAINMENT							
WAVERLEY HALL		COMMUNITY CHEST								
 COMMUNITY CHEST		FIRST REPUBLIC BANK								
KENNEDY BUILDING		MIT								
 NORTHEASTERN UNIVERSITY		RFP								
THE TIMBERLAND CO.		SCOM CORPORATION MARLBORO CAMPUS								
THE GROMMET		CHANGE ORDERS								
 THE BROAD INSTITUTE		675 WEST KENDALL STREET								
UNIVERSITY STATIONARY										
JUST BUILD DESIGN PRICING		SQUEAKY BEAKER CAFE	ACEITUNA GRILL		NACO TACO			KENDALL READS LITTLE FREE LIBRARIES	COMMUNITY CHEST 	KENDALL SKATES ICE RINK

TITANIUM

Senator | workflow



NEMO
TILE + STONE

DIAMOND

Interface®



teknion

PLATINUM

Allsteel®

BEST TILE®
SINCE 1956



TotalOffice
INTERIORS



Milliken



GOLD



BostonArt

ARROWSTREET
ARCHITECTURE & DESIGN



creative materials corporation

CORDERMAN & COMPANY



NYFRBKUWN

BERNHARDT

shaw contract®



PERKINS + WILL



Thank you to all our generous sponsors.



— PERSONAL HARBOR

river



GLOBALFURNITUREGROUP.COM



MULTIFORM

Cheer / Vital

Milliken



millikenfloors.com | 800.824.2246

THANK YOU TO OUR 2018 CHAPTER SPONSORS!

TITLE



Tandus Centiva
A Tarkett Company

PATRON



HAWORTH®
Environments  Work.

Steelcase | RED THREAD

Kimball | strategic DIRT

SUSTAINING

Knoll  Office Resources
Spark Your Work

DONOR



■ D.L.Couch



IGNITING THE
DESIRE TO
CREATE AND
THE CONFIDENCE
TO **SUCCEED**
IN UNDERSERVED
YOUTH.

Raw Art Works is a youth arts organization that believes all kids should be seen and heard.

Visit us at www.rawartworks.org to learn more.

RAW ART WORKS
37 CENTRAL SQUARE, LYNN, MA 01901







The IIDA New England Chapter Philanthropy Committee strives to inspire designers and industry members to give back to local organizations which we believe have honorable missions to serve our community.



Our efforts go to support these organizations through coordination of volunteer activities, donation drives, and monetary gifts provided by successful events sponsored by our IIDA chapter. By advertising and encouraging participation, members of our professional community come together to serve a common cause. Our work is incredibly rewarding as we witness the impact our committee's events make from year to year, not only by the essential support we help provide to local organizations, but also the relationships that have grown within our professional community from

participation. We as a committee help bring joy and appreciation to local New Englanders which in turn brings happiness to all of the design community members who contribute.

Each year, the IIDA New England Design Awards program supports a local organization that does work to benefit our community. Our 2018 program supports the wonderful organization Raw Art Works (RAW).

Over 1,200 youth aged 6-19 attend RAW's free programs each year. RAW offers visual arts groups, a film school, leadership development opportunities and teen employment. Through Project Launch, mentors from the community guide RAW's high school juniors and seniors through the daunting college admissions and financial aid process. RAW recognizes the vital potential of each young artist and commit ourselves daily to their mission: to ignite the desire to create and the confidence to succeed.

Find more information on RAW at www.rawartworks.org.



boston light source

64 Commercial Wharf, Boston MA 02110
617.788.2400 / info@bostonlightsource.com

ROBERT BENSON PHOTOGRAPHY



AMENTA EMMA ARCHITECTS
2017 HIDA NE DESIGN AWARDS - BEST IN SHOW
ROBERTBENSONPHOTO.COM 860.951.3004



ARROWSTREET
ARCHITECTURE & DESIGN

ARROWSTREET.COM
10 POST OFFICE SQUARE
SUITE 700K, BOSTON, MA 02109



THE TILE AND STONE
experts



CUSTOMER FOCUSED
CONSTRUCTION

CONCEPT
COMPLETION

JDJL
Corporate Interiors, Inc.

BEST TILE®

SINCE 1956

f@p BestTile.com

2018 IIDA Design Awards
COMMITTEE MEMBERS



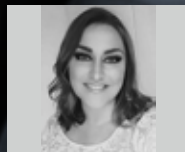
Heather Brunini
TotalOffice
Co-Chair



Marcus Hamblin
Gensler
Co-Chair



Ryan Akers
Interface
Sponsorship



Jessica Bartram
IntrinXec Mgmt.
Administrator



Carly Bassett
TotalOffice
Event



Svetlana Bekker
Apex Lighting Solutions
Event



Meghan Bildner
Allsteel
Sponsorship



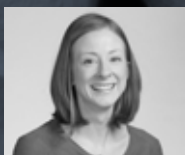
Annamarie Coyne
Format Design Elements
Sponsorship



Tommy DeRosa
Columbia Construction
Media



Charlotte De Santis
Office Resources, Inc.
Media



Rebecca Durante
Wilson Butler Architects
Event



Jennifer Gregoire
SGA
Professional Entries



Caitlin Greenwood
MPA
Media



Kara Hanson
Gensler
Sponsorship



Colleen Higgins
Gensler
Sponsorship



Teagan Jeffords
*Peabody Office
 Student Entries*



Josh Matteston
*Matteson & Associates
 Professional Entries*



Kelly McFerran
*Wilson Butler Architects
 Event*



Kara McGuane
*MPA
 Student Entries*



Mai Nguyen
*Spinneybeck/Filzfelt
 Board /VP of
 Chapter Events*



Brian Potter
*Genster
 Professional Entries*



Jeremy Rodgers
*Laminart
 Event/Graphics*



Ashley Siswick
*Wayfair
 Event*

**WE WOULD LIKE TO
 RECOGNIZE AND THANK
 ALL OF OUR PARTNERS
 AND VOLUNTEERS WHO
 HELPED MAKE THIS
 EVENT POSSIBLE.**

Event Announcer: Chris Huff, *Tarkett* / **Event Photography:** Kim Neal / **Graphic Design:** Jeremy Rodgers, *Laminart* & Ria Knapp / **Music:** DJ Action Jackson / **Florals:** Tom Capano, *Fresh Look Designs* / **Student Judging Host:** Peabody Office / **Pre-Event Media Coverage:** High Profile / **Step & Repeat Photography:** Bernadette Longino / **Video Production:** Bernadette Longino Hasson & Julie Hasson / **Stage Assistants:** Courtney Carlson, *Wayfair* & Joe Dugan, *Total Office Interiors*



PROJECT CATEGORIES

NEW CATEGORIES FOR 2018*

GRADUATE DESIGN

RESIDENTIAL: MULTI-UNIT

UNDERGRADUATE DESIGN

SENIOR LIVING*

**BUILDING REPOSITIONING /
BUILDING AMENITIES***

STUDENT HOUSING*

COMMUNITY & CULTURE

**WORKSPACE
UNDER 20,000SF**

EDUCATION

**WORKSPACE
20,000-80,000SF**

HEALTHCARE

**WORKSPACE
OVER 80,000SF**

**HOSPITALITY:
HOTEL / LODGING**

WORKSPACE ON A BUDGET*

**HOSPITALITY:
RESTAURANT / RETAIL**

BEST IN STATES
CONNECTICUT
MASSACHUSETTS
NEW HAMPSHIRE
RHODE ISLAND

RESEARCH LAB

RESIDENTIAL: PRIVATE

BEST IN SHOW

Professional **ENTRY JUDGES**



WILLIAM HANLEY

Executive Editor, Surface
Digital Director, Surface Media

William Hanley is a New York City-based writer, editor, and content strategist, focusing on architecture, design, art, and digital culture. He is executive editor at Surface magazine and digital director at Surface Media. His recent work includes cover profiles of Jeanne Gang and Norman Foster, as well as interviews with Rirkrit Tiravanija and Tom Sachs, published in Surface and Construction and Collapse: The Work of Allyson Vieira published by the Swiss Institute.



TANIYA NAYAK

Interior Designer
Taniya Nayak Design

Taniya Nayak is one of the nation's foremost interior designers. She became a household name as a design expert member on HGTV and Food Network. Taniya owns a successful interior design firm, Taniya Nayak Design LLC., where she adds a fresh, clean look to both commercial and residential spaces.



DAVID OAKEY

Product Designer
David Oakey Designs

David Oakey, founder of David Oakey Designs is the exclusive product designer for Interface and Flor since 1994, and now leads global efforts in sustainable or "smart" design, learning from nature, the study of biomimicry. Oakey and his design philosophies have been featured in Business Week, Fast Company, Interior Design Magazine, New York Times Science, Green Futures Magazine, I.D. Magazine, and The Smithsonian Magazine.

Notes

A series of 25 horizontal dotted lines for writing notes.



MEP/FP Engineering
Commissioning
Energy Modeling
IT Consulting
Scanning
Security Design

www.wbengineering.com



shaw contract®



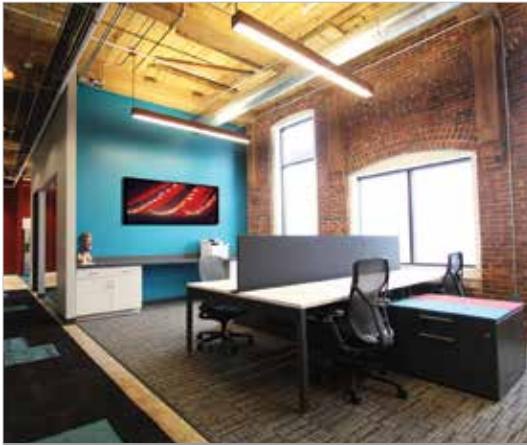
Boston Showroom

200 State St. 4th Floor

Boston, MA

617.261.1556

Allsteel



furnishing your vision



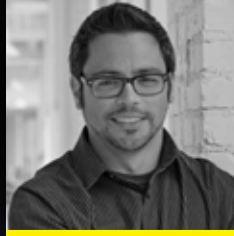
Student ENTRY JUDGES



DIANNE DUNNELL
Marguilles Peruzzi
Architects



JOHN DAY
LDa Architecture
& Interiors



MARC MOURA
Amenta/Emma
Architects



MONIKA AVERY
The S/L/A/M
Collaborative



CELEBRATING
20
YEARS

Allsteel
AUTHORIZED DEALER
TOI-INC.COM

STUDENT ENTRIES

- 7 ENTRIES -





GRADUATE DESIGN

Category

GRADUATE DESIGN



THE RIGHT OF LIGHT

HUALIAN GAO / Boston Architectural College



BLARE

ISABELLA COPPOLA / Mount Ida College



COSPLAY SOCIETY

MARYANN GEORGE / New England School of Art & Design, Suffolk University



AMAZON PLACE

REBECCA PITTORE / New England School of Art & Design, Suffolk University



AGING IN GRACE

TIFFANY YU / Mount Ida College



TERRA GREEN

LINDSEY ARTHUR / Endicott College



BLEND

AMELIA PAPADAKIS / Endicott College

- 8 ENTRIES -

Oh, the Places

By
Dr. Seuss



UNDERGRADUATE DESIGN

Category

UNDERGRADUATE DESIGN



MERAKI HAIR SALON AND SPA

NIKITA BONTRA / University of Bridgeport



PRO DOMO ET MUNDO

KATERINA SULANOVA / New England School of Art & Design, Suffolk University



EVOLVE UNIVERSITY

STEPHANIE MCSHANE / New England Institute of Technology



ZENITH

SYDNEY KIMBALL / Endicott College



SALCHETO

AMANDA LOMBARDO / Mount Ida College



ART OF NAILS

MONA ALBALA / University of Bridgeport



ESPERER

AMIRA MOHAMED / New England Institute of Technology



CLAY N SOUL

EMILY PERIERA / Endicott College

PERKINS+WILL

Spaces That Inspire.

perkinswill.com

CORDERMAN
& COMPANY

CONSTRUCTION MANAGEMENT: www.cordermancompany.com

BERNHARDT | design



DELTA

see what Delta can do™



creative materials corporation

architectural tile | stone | glass

www.creative-materials.com

Atlanta | New York | Dallas | Chicago | San Francisco | Los Angeles | Miami



NYER BRUWN

Culture. Driven. Design.



Galaxy

GLASS & STONE®

INSPIRED DESIGN • INNOVATIVE SOLUTIONS • ONE TRUSTED RESOURCE®



www.division9collaborative.com

617.592.2200

Proudly representing premier lighting manufacturers & servicing the New England design community for over 14 years!

www.ApexLightingSolutions.com
www.ApexIBSolutions.com



The point where all ascending lines converge.

Indoor & Outdoor Lighting
Controls Integration
Custom Fixtures

High Performance IGUs
Acrylic Panels
Decorative Metal Panels
Shading Systems



Now offering luminous stretched ceilings by Barrisol & decorative metals for interior/exterior by Moz Metals!



Congratulations
TO ALL OF THIS YEAR'S NOMINEES



KRONOS - LOWELL, MA



NETCRACKER - WALTHAM, MA



TAKEDA - CAMBRIDGE, MA



ONE TECH DRIVE - ANDOVER, MA



J. CALMAN & ASSOCIATES
CONSTRUCTION MANAGERS EST. 1988

WE BUILD...

ACADEMIC \ CORPORATE \ SCIENCE & TECHNOLOGY \ HEALTHCARE



HermanMiller

GEIGER



NEW KI SHOWROOM OPENING SPRING 2018
ONE DESIGN CENTER PLACE - SUITE 514
BOSTON, MA 02210
617.542.4043

KI



THE ULTIMATE
FLOORING EXPERIENCE

 **new england lab**
lab-tested furniture systems

Baltimore • Boston • Raleigh • Richmond

FURNITURE SYSTEMS

CASEWORK

FUME HOODS

MEDIA CEILINGS

AND MORE!



888.635.2080 | newenglandlab.com



Our services

Gallery
Art Advising
Room Rendering
Custom Framing
Installation

21 Drydock Ave
Boston, MA 02210
617.951.0900

info@bostonartinc.com
bostonartinc.com

 BostonArt

Distinct
Collaborative
Proficient
Cost Effective

PROFESS ENTRIES

IONAL

- 8 ENTRIES -





NEW CATEGORY FOR 2018

BUILDING REPOSITIONING / BUILDING AMENITIES

Category

BUILDING REPOSITIONING / BUILDING AMENITIES



THE CENTER AT CORPORATE DRIVE

CBT / Colburn & Guyette / Simpson Gumpertz & Heger / Creative Office Pavilion / Philips Lighting / Advanced Signage / Creative Materials Corp. / Maharam / M.L. McDonald / NIBA Designs / Galaxy Glass & Stone



RHODE ISLAND COLLEGE GAIGE HALL

LLB ARCHITECTS / Wilkinson Assoc., Inc. / Building Engineering Resources, Inc. / Traverse Landscape Architects / Pare Corporation / Pare Corporation / Abernathy Lighting Design, Inc. / H.V. Collins Co. / Nat Rea Photography / Creative Office Pavilion / Forbo Flooring / W.B. Mason / Staples Business Advantage / Momentum Group



LINX

SGA / MacNamara Salvia / Boylston Properties / RJ O'Connell / CRJA / Code Red Consultants / Patcraft / Stone Source / Workflow Interiors / Morin Corp. / Alucobond



SCHRAFFTS CITY CENTER

CBT / HLB Lighting / MacNamara Salvia / CRJA-IBI Group / Peabody Office Furniture / RDK Engineers / FiltzFelt / Visual Lighting Technologies / Designtex Bespoke / reSAWN / Custom Metal Craft



ANDOVER WELLNESS & CONFERENCE CENTER

PCA (PRELLWITZ CHILINSKI ASSOCIATES) / AKF Group LLC / Odeh Engineers / Beals & Thomas / Lameroux Design / Creative Office Pavilion / Daltile / Custom Architectural Design Management, LLC



125 SUMMER STREET LOBBY REPOSITIONING

STANTEC ARCHITECTURE INC. / Turner Construction / HDLC Lighting Design / RDK Engineers / Boston Art / Copley Wolff Design Group / Peabody Office / Mark Richey Woodworking / New House Veneers / McGrory Glass / Stone Source



116 HUNTINGTON AVENUE

DYER BROWN ARCHITECTS / Shawmut Design and Construction / WB Engineers + Consultants / MacNamara Salvia / Redgate Real Estate Advisors / Columbia Property Trust / Walter A. Furman Co. / Boston Light Source / Arteriors / Stone Source / Bison Innovative Products



ONE AND TWO TECH DRIVE

FUSION DESIGN CONSULTANTS, INC. / J. Calnan & Associates / Novaya Real Estate Ventures / Setanta Realty / Peabody Office

- 3 ENTRIES -





COMMUNITY & CULTURE

Category

COMMUNITY & CULTURE



**CRANSTON PUBLIC LIBRARY
CHILDREN'S ROOM**

LLB ARCHITECTS / Wozny/Barbar & Associates,
Inc. / Chirico Construction Co Inc. / Nat Rea
Photography / Milliken Carpet / W.B. Mason
/ Lumetta / Louis Poulsen / Level Digital
Wallcoverings



**TEMPLE BETH SHALOM
RENOVATION & EARLY LEARNING
CENTER ADDITION (C&C)**

BKA ARCHITECTS, INC. / Fort Point Project
Management / Chapman Construction / Rivermoor
Engineering / Hammer + Walsh Design, Inc. /
Building Engineering Resources / Milliken Carpet
/ Interface / Office Resources / Ergon Engineered
Stone / A.P. Dailey



HARVARD MEMORIAL CHURCH

PAYETTE / Acentech / ARUP / Nitsch Engineering, Inc. / Building Conservation Associates, Inc. / Shaw Contract / Hightower Group / Dooge Veneers / Boss Design

- 14 ENTRIES -





EDUCATION

Category
EDUCATION



**HIGHER AIMS, HIGHEST
COLLABORATION, PROVIDENCE**

SMMA / Caputo & Wick, Site and Civil Engineering / Sterling Engineering / Aero Mechanical / Horton Lees Brogden Lighting Design / Skyline Group / Armstrong / Creative Materials Corp. / Creative Office Pavilion / Maharam / Acclaim Lighting



**CENTER FOR
INTERPROFESSIONAL
STUDIES AND INNOVATION**

ISGENUITY / RDK Engineers / Wise Construction / Education Management Solutions / Goldstein-Milano Structural Engineering / Shaw Contract / IdeaPaint / Sanfoot Natural Wood Wallcoverings / DuPont Corian / Philips Lighting



**MARTIN TRUST CENTER FOR
MIT ENTREPRENEURSHIP**

ANALOGUE STUDIO / Simpson Gumpertz & Heger / Wise Construction / T3 Advisors / Linehan Engineering



**GREEN CENTER FOR
STUDENT SUCCESS**

ANALOGUE STUDIO / RDK Engineers / Simpson Gumpertz & Heger / ARUP / Harvey Construction / Wessling Architects



TEMPLE BETH SHALOM RENOVATION & EARLY LEARNING CENTER ADDITION (C&C)

BKA ARCHITECTS, INC. / Fort Point Project Management / Chapman Construction / Rivermoor Engineering / Hammer + Walsh Design, Inc. / Building Engineering Resources / Milliken Carpet / Interface / Office Resources / Ergon Engineered Stone / A.P. Dailey



EMERSON COLLEGE STUDENT DINING CENTER

ELKUS MANFREDI ARCHITECTS / Lee Kennedy / Vanderweil Engineers / Acentech / Kalin Associates



ROCKEFELLER LIBRARY AT BROWN UNIVERSITY

ED WOJCIK ARCHITECT, LTD. / Shawmut Design and Construction / Creative Office Pavilion



MOUNT WACHUSETT COMMUNITY COLLEGE

PCA (PRELLWITZ CHILINSKI ASSOCIATES) / Odeh Engineers / AKF Group LLC / A.T. Leonard & Associates / Creative Office Pavilion / Shaw Contract / Boston Light Source / Prudential Lighting / OFS Brand Furniture

Category

EDUCATION



ENFIELD HIGH SCHOOL

SILVER, PETRUCELLI & ASSOCIATES, INC. / Milone and MacBroom / Michael Horton Associates / Page Photography / Gilbane, Inc. / D'Agostino Associates / Brooks Acoustics Corporation / RJS Barber Associates / Sherwin Williams / Armstrong / Amerlux / Teknion / American Olean / USG



HAMILTON SMITH HALL

DIMELLA SHAFFER / LA Fuess / Collaborative Lighting / Acentech / Fitzmeyer and Tocci Associates / Bryant Associates / Armstrong / Decoustics / Mohawk Group / Garden State Tile



**SOUTH COLLEGE
ACADEMIC FACILITY**

DIMELLA SHAFFER / KLIMENT HALSBAND ARCHITECTS / Bard, Rao + Athanas Consulting Engineers / RSE Associates, Inc. / Fernandez & Associates / Nitsch Engineering / Towers Golde / Daltile / Forbo / Milliken Carpet / Knoll / Herman Miller



**LAFAYETTE HALL
AT HOUSATONIC
COMMUNITY COLLEGE**

AMENTA EMMA ARCHITECTS / BVH Integrated Services, Inc. / ACT (Advanced Communication Technologies) / Newfield Construction / Armstrong / Steelcase / Shaw Contract / Hunter Douglas / Key Resin Co.



MIT ATLAS SERVICE CENTER

GENSLER / Acentech / WSP Group / LAM Partners
/ Cosentini Associates / Dharam Consulting
/ Armstrong / Selux / Mechoshade / Windsor
Architectural Woodworking / Modern Glass



NORTHEASTERN UNIVERSITY INTERDISCIPLINARY SCIENCE & ENGINEERING COMPLEX

PAYETTE / ACT (Advanced Communication
Technologies) / ARUP / Suffolk Construction / RW
Sullivan / Acentech / Bentley Prince Street / Red
Thread / Maharam / Johnsonite / Millwork One

- 5 ENTRIES -





HEALTHCARE

Category
HEALTHCARE



**BRIGHAM & WOMEN'S
HOSPITAL NICU**

TRO / Legatt McCall Properties / Walsh Brothers /
Museum of Fine Arts / Nora Systems, Inc. /
Creative Office Pavilion / LG Hi-Macs /
Pinnacle Lighting



**SIGNATURE HEALTH
CANCER CENTER**

TRO / Murphy McManus / Kim Hollon, CEO/
President of Signature Healthcare / W.B. Mason /
Boston Art / David Edward / Forbo / LA-Z-Boy



THE LEONARD P. ZAKIM CENTER

ISGENUITY / AKF Group LLC / Cavanaugh Tocci
Associates, Inc. / Creative Office Pavilion /
Reflex Lighting / Mats Inc. / Wolf Gordon



SPORTS PERFORMANCE CENTER

ISGENUITY / Delbrook Construction / A&E
Fire Protection / Harold Brothers Mechanical
Contractors / Preferred Contractors, Inc. / Glynn
Design Inc. / Armstrong / W.B. Mason / Zandur



THE NEELY HOUSE AT TUFTS MEDICAL CENTER

UPHEALING / Metric Construction / Hachey
Millwork / Light Insight Design Studio / Steve
Swift, Glass Designer / Anton Grassl / Mannington /
Interface / Crossville / D.L. Couch / CUMAR

- 5 ENTRIES -





HOSPITALITY

HOTEL / LODGING

Category

HOSPITALITY: HOTEL / LODGING



EMIRATES

UNISPACE / BALA/TMP (formerly TMP Consulting Engineers, Inc.) / Massport / Walter A. Furman Co. / Pavilion Floors / JAJ



MATADORA

PERKINS+WILL / Consentini Associates, Inc. / Sladen Feinstein Lighting Consultant / Acentech / CM&B / COJE Management Company / Credible Upholstery / Artco / Cole Cabinets / Delta Furniture / Gloster Furniture Inc.



BOBBY ORR SUITE AT THE AMES HOTEL

BERGMEYER ASSOCIATES, INC. / Sea-Dar Construction / Stys Hospitality Initiative / The Parker Company / Maharam / Bolon / 3form, LLC / New England Seating Co., LLC / Sign Design, Inc.



HOTEL GRINNELL

PERKINS+WILL / Jacqueline McGee / Janet D'Aprix / Lenny Pierce / Lynsey Coville / Bushong Construction Company, Inc. / Spectrum Lighting & Interiors / Made Goods / Opuzen / Justin David / Alliant Energy IPL



FOUR RIVERS BALLROOM

STIBLER ASSOCIATES / The Pyramid Hotel Group /
Martini Northern / Lighting Elysium

- 10 ENTRIES -





HOSPITALITY

RESTAURANT / RETAIL

Category

HOSPITALITY: RESTAURANT / RETAIL



BACK BAY BEATS

ANALOGUE STUDIO / Acentech / Cromwell Consulting Inc. / BLW Engineers, Inc. / Available Light / Trinity Building and Construction Corp.



SAVANNAH BEE COMPANY

BERGMEYER ASSOCIATES, INC. / Don Penn Consulting Engineers / Lumen Studio Inc. / Hannah Design Group / EMJ Consulting Group, LLC / Crossville / PD Instore / SureCrete Design Products / Roca Tile USA / Stikwood



SONOS STORE

BERGMEYER ASSOCIATES, INC. / Work Order / Dynamic Resources / Black Box / Cornerstone Agency / Kingsmen / Deadgood Trading Ltd / Showman Fabricators / Camille Walala / Neil Raitt



RUKA RESTOBAR

BERGMEYER ASSOCIATES, INC. / BLW Engineers, Inc. / Odeh Engineers / Colburn&Guyette / Focus Lighting / Ashling Incorporated / Millennium Shutters / Proportion Design / Select Stone, Inc.



LOLITA COCINA & TEQUILA BAR

BERGMEYER ASSOCIATES, INC. / BLW Engineers, Inc. / Odeh Engineers / Colburn&Guyette / Focus Lighting / John Lyons Systems / TriMark United East / Demejico - Authentic Spanish Designs / Dynamic Architectural Windows & Doors



VILLA FLORENCE HOTEL

PERKINS+WILL / Stanton Architecture / Jacqueline McGee / Janet D'Aprix / Amy Rioux / Jennifer Miller / CCI General Contractor, Inc. / Fox & Fox Design / Kevin Barry Fine Arts / Ovidio Jimenez / Ping Ding VIA Pico Arts / Trinity Engineering / IK Design, Inc. / D.L. Couch / Romo / Astek / Opuzen / Steven King Decorative Carpets



MONTAMMY GOLF CLUB

JUDD BROWN DESIGNS, INC. / Rogers McCagg / American Wood Carving / Persimmon Engineering / DHI general Contractors / Q-REP, LLC - Glenn Woland / Cabana Coast / Harmony Contract / Shelby Williams / Renaissance / FABRIC



GREATHORSE CLUB

TMS ARCHITECTS / Boston Art / CE Floyd / Shaw Contract / Dale Chihuly Studio / Millwork One / Troy Lighting / Schumacher

Category

HOSPITALITY: RESTAURANT / RETAIL



NEW ENGLAND INSTITUTE OF TECHNOLOGY STUDENT CENTER

CONNOR ARCHITECTURE / Mystic Scenic Studios / Anodyne Corporation / BER - Building Engineering Resources Inc. / Creative Materials Corp. / Best Tile / Interface / Marble and Granite, Inc. / Wilsonart



AVIDIA BANK FINANCIAL LOAN CENTER

CP INTERIORS / Davis Architects / Hadrien Dimier Photographie / Antonelli Construction / 3form / Allsteel / Humanscale / Shaw Contract / TotalOffice Interiors

- 3 ENTRIES -



A black and white photograph of a research laboratory. In the foreground, a large, intricate wireframe sculpture made of thin, dark rods is visible, resembling a complex network or a biological structure. The sculpture is positioned in front of a large glass window that looks into a laboratory. Inside the lab, various pieces of equipment, including what appears to be a microscope and other scientific instruments, are visible on shelves and tables. The lighting is dramatic, with strong highlights and deep shadows, creating a sense of depth and focus on the sculpture.

RESEARCH LAB

Category

RESEARCH LAB



**ADVANCED FUNCTIONAL
FABRICS OF AMERICA (AFFOA)**

SLAM COLLABORATIVE / WSP Group / Siena Construction / MIT / MITIMCO / Siena Construction / JLL / The Green Engineer, Inc. / Business Interior Floors / Armstrong / Forbo / Johnsonite / American Olean



**BLUEPRINT MEDICINES
HEADQUARTERS RELOCATION**

TRIA / The Richmond Group / AHA Engineers / MacNamara Salvia / Office Resources / Reflex Lighting / New England Lab / Milliken Carpet / Knoll / Signs on Site



CONFIDENTIAL BIOTECH COMPANY

LAB. LIFE. SCIENCE. ARCHITECTURE, INC. /
The Richmond Group / AHA Engineers / Stephanie
Goldberg / Mark Reed / Leonard Osborne / Alan
Freid / Grace Santos / Kayla Schwartz /
TotalOffice Interiors / Interface / Omnilite /
Armstrong / USG Ceilings

- 6 ENTRIES -





RESIDENTIAL
PRIVATE

Category

RESIDENTIAL: PRIVATE



VASTU SHASTRA HOUSE

LDA ARCHITECTURE & INTERIORS / Denali Construction Corporation / Michelle Crowley Landscape Architecture / Greg Premru Photography / Ligne Roset / Lekker / DiscoverTile



VERO BEACH RESIDENCE

ACTWO ARCHITECTS / Spazio Rosso / C2 Studio / Farrow Construction / Daltile / Bulthaup / NanaWall / Moroso



ARCADIA HOUSE

VISNICK & CAULFIELD ASSOCIATES / Dumont Construction, Inc. / Siegel Associates, Inc. / Reflex Lighting / Pete Kercz / Carole Kitchen & Bath Design / Porcelanosa / Tandus Centiva / Marble and Granite, Inc. / Best Tile



ROY RESIDENCE

TMS ARCHITECTS / CM Ragusa / Hubbardton Forge / Serena & Lily / Stanley Furniture / Portico Tile / Sewfine



PRIVATE RESIDENCE AT 319A

STANTEC ARCHITECTURE INC. / Casa Design Living
/ Ligne Roset / Chimera Lighting / Steven King
Decorative Carpets



FOUR51 PENTHOUSE

HACIN + ASSOCIATES / The Holland Companies /
Bartek Konieczny / William Bray Cabinetmaker /
Adtech Systems / Tiles by Perfection / Volk Studio
/ Alice Tachney / Jan Jander / Fort Street Studio /
Studio 1thousand

- 7 ENTRIES -



A black and white photograph of a modern, minimalist living area. The room features large windows with sheer curtains, offering a view of a city skyline. The furniture includes a dark sofa, a tufted ottoman, a small table, and a floor lamp. The overall aesthetic is clean and contemporary.

RESIDENTIAL

MULTI-UNIT

Category

RESIDENTIAL: MULTI-UNIT



RE150

CUBE 3 STUDIO / Callahan Construction /
Wozny Barber & Associates / Shadley Associates /
3form / Porcelanosa / Milliken Carpet /
Bolyu / Siena Wood



WAVERLY HALL

ANALOGUE STUDIO / Siena Construction /
Cosentini Associates / Acentech / Simpson
Gumpertz & Heger / Hereva Consulting



MERIEL MARINA BAY

ELKUS MANFREDI ARCHITECTS / Callahan
Construction / Wozny/Barber & Associates /
Veitas and Veitas Engineers / Boston Art



CAPEWELL LOFTS

CROSSKEY ARCHITECTS, LLC / TO Design, LLC /
James K. Grant Associates / van Zelm Engineers /
Armstrong / Davis Furniture / Illuminate Vanguard
/ Benjamin Moore & Co.



OCEAN 650

ARROWSTREET ARCHITECTURE AND DESIGN

/ Lincoln Property Company / Plumb House / Erdreich White Fine Art / Upton + Partners / Bob Upton / Office Resources / Patcraft / Philip Jeffries / Reflex Lighting / Division 9 Collaborative



WATERMARK SEAPORT

STANTEC ARCHITECTURE INC.

/ Acentech / Cosentini / Skanska Commercial Development / LAM Partners / Cosentini / Artaic Tile / Yellow Goat Lighting / Creative Materials Corp. / Hope's Windows & Doors / Boston Art



THE EDDY

STANTEC ARCHITECTURE INC.

/ Gerding Edlin / Suffolk Construction / WSP Engineers / Copley Wolff Landscape Architect / LAM Partners Lighting Designer / RadLab / EGE Carpet / Tandus Centiva / Filz Felt / Harbor Arts Association

- 5 ENTRIES -





NEW CATEGORY FOR 2018
SENIOR LIVING

Category

SENIOR LIVING



KENDAL ON HUDSON

DIMELLA SHAFFER / Acentech / Kohler Ronan / Weidinger / Architecteam / Andron Construction / Armstrong / Artaic / Atlas Carpet / Clipso Custom Graphic Acoustic Panels / FreeFit



OASIS AT DODGE PARK

LEVI + WONG DESIGN ASSOCIATES / Willie Wong AIA / Rosie Terella / Chestnut Design Art Advisors, Mary Dawley / Jon Sachs Graphics / Cavanaugh Tocchi Associates / Armstrong / Inpro Corporation / Shaw Contract / Staples Business Advantage / Sherwin Williams



THE BURNHAM FAMILY MEMORY CARE RESIDENCE

AMENTA EMMA ARCHITECTS / C.E. Floyd / Didona Associates Landscape Architects / Mannington / Illuminate Vanguard / Real Integrated Systems



BEAUMONT REHABILITATION AND SKILLED NURSING CENTER

WELLESLEY DESIGN CONSULTANTS, INC. / Cutler Associates, Inc. / Chestnut Design / Union Office Interiors / T1 Associates, Inc. / Bernhardt / Global Furniture Group / Tandus Centiva / Kwalu / Mayer Fabrics



RHODE ISLAND VETERANS HOME

BREWSTER THORNTON GROUP ARCHITECTS, LLP /

SFCS Architects / Building Engineering Resources / Odeh Engineers / PARE Corporation / Wilkinson Associates / Landscape Elements / Warren Jagger Photography / Fooddesign Associates, Inc. / Daltile / Shaw Contract / Johnsonite / Armstrong / Champlain Stone / Laticrete / Altro / Parterre / Masland / Tarkett / Sherwin Williams / Nova Wood Products / Nor'Easter Installations, Inc. / Cree / Indy / HE Williams / Corbett / Kitchler / Mark / Bruck / Hinkley / Hubbardton Forge / Justice Design / AXO / Forecast / Tech / Visa / Besa / Oggetti Fili / Juno / WAC / JES Lighting / Progress / William Marvy Co. / Pinnacle / Ilex / Access / Great Outdoors / Acolyte / Evenlite / Troy Lighting / I2 Systems / Acculux / Insight / Quality / The Sign Shoppe / Oldcastle / KI

- 5 ENTRIES -

A high-angle, black and white photograph of a person wearing glasses and a white cable-knit sweater, kneeling on a wooden floor. They are focused on assembling a complex model made of metal rods and joints. The model is laid out on a wooden board that has some faint white lines drawn on it. The person is using a screwdriver to adjust one of the components. The overall mood is one of concentration and craftsmanship.

NEW CATEGORY FOR 2018
STUDENT HOUSING

Category

STUDENT LIVING



WEST EDGE

CUBE 3 STUDIO / KBS / Kitchen & Associates / Joyce Contract Interior Furniture / Shaw Contract / Mannington / Sustainable Flooring



MONADNOCK HALL

LAVALLEE BRENSINGER ARCHITECTS / Mackey Mitchell Architects / Whiting-Turner Contracting Company / Rist-Frost-Shumway / PMA Consultants / Foley Buhl Roberts & Associates, Inc. / Anton Grassl Architectural Photography / Creative Office Pavilion / takeform / Walltalkers, Tac wall / Soelberg Panels / Shaw Contract



WEST HALL STUDENT HOUSING

ARC/ARCHITECTURAL RESOURCES / Odeh Engineers / LAM Partners / Stegman + Associates / Van Zelm Engineers / Thornton Tomasetti / Forbo / Creative Office Pavilion / General Woodworking, Inc. / USG / Gary Barsomian Dietrich / Salmon Studios



EMERSON COLLEGE 2 BOYLSTON PLACESIDENCE

ELKUS MANFREDI ARCHITECTS / Vanderweil Engineers / Suffolk Construction / Acentech



SACRED HEART UNIVERSITY, PIERRE TOUSSAINT HALL

THE S/L/A/M COLLABORATIVE / Consulting
Engineering Services, Inc. / Milone & MacBroom,
Inc. / Convergent Technologies Design Group, Inc. /
Tandus Centiva / Shaw Contract / Armstrong /
MechoShade / Element by Tech Lighting

- 15 ENTRIES -





WORKSPACE

UNDER 20,000SF

Category

WORKSPACE UNDER 20,000SF



WEB INDUSTRIES

CUBE 3 STUDIO / Coffee Design + Build Co / Wonzy Barber & Associates / Herman Miller Furniture / Herman Miller / Mannington / Masland Contract



AVALONBAY COMMUNITIES, INC. NEW WORKSPACE

MARGULIES PERRUZZI ARCHITECTS / Vanderweil Engineers / J.J. Vaccaro, Inc. / American Office / Omni-Lite / Entegra Development / Herman Miller / Armstrong / Milliken Carpet / Arnold Contract / Arnold Reception Desks / CCN



GCP APPLIED TECHNOLOGIES, GLOBAL CENTER FOR R&D

CUBE 3 STUDIO / Cosentini Associates / Ryan Construction / Capers Design / Creative Office Pavilion / Dirtt / Shaw Contract / Caesarstone



A HOME FOR IDEAS | CRAMER CORPORATE HQ

SMMA / Colburn&Guyette / Shaw Contract / Union Office Interiors / Loki Box Design / Habitat for Humanity



NETCRACKER

PERKINS+WILL / AHA Engineers / J. Calnan & Associates / McMahon Architects-Architect of Record / CPRM, LLC-Project OPM / Mannington / Porcelanosa / National Premier Partners / Sensitile / Galaxy Glass



LUMENPULSE U.S. HEADQUARTERS

ANALOGUE STUDIO / Cosentini Associates / Columbia Construction / Jones Lang LaSalle / FMC / Environments at Work



CONFIDENTIAL GLOBAL DESIGN FIRM

UNISPACE / BALA/TMP (formerly TMP Consulting Engineers, Inc.) / D. Sceppe Lighting Design, Inc. / SignWorks Group / Knoll / Herman Miller / Business Interior Floors / Stone Source



BOSTON ART

ELKUS MANFREDI ARCHITECTS / LAM Partners / Cosentini Associates / Elaine Construction / Windsor Architectural Woodworking / MetalCraft LLC / Vibia

Category

WORKSPACE UNDER 20,000sf



**MARTINGALE ASSET
MANAGEMENT**

VISNICK & CAULFIELD ASSOCIATES / Lee Kennedy
/ Vanderweil Engineers / Office Resources, Inc. /
Spaceworks Architectural Interiors / Red Thread
/ Knoll / Bloomsburg / Siena Flooring Solutions /
Modernus



**PARTNERS CAPITAL
INVESTMENT GROUP**

DYER BROWN ARCHITECTS / Structure Tone / WB
Engineers + Consultants / Peabody Office / Dirtt /
The Woodworks / Boston Light Source



REWARD GETAWAY

FUSION DESIGN CONSULTANTS, INC. / Avison
Young / Vantage Builders / Integra LEED Consulting
/ Area Squared / Inside Source



CORPORATE OFFICE

STIBLER ASSOCIATES / Farley White Interests /
Cornerstone PDC



PLADIS

AMENTA EMMA ARCHITECTS / C+F Engineers /
Pavarini Construction / Illuminate Vanguard /
Milliken Carpet / Allsteel / Teknion



PEMBROKE REAL ESTATE OFFICE RENOVATION

STANTEC ARCHITECTURE INC. / Structure Tone
/ Vanderweil Engineers / Jones Lang LaSalle /
Illuminate / Butler Architectural Woodworking /
FilzFelt / Environments at Work / Plyboo /
EGE Carpets / Klein



PHOENIX

AMENTA EMMA ARCHITECTS / Interface / Cascade
Coil / Knoll Textiles / Carnegie Xorel

- 15 ENTRIES -





WORKSPACE

20,000-80,000SF

Category

WORKSPACE 20,000 - 80,000SF



AIS HEADQUARTERS

NELSON / AIS



THE BRATTLE GROUP

CBT / Cresa / Gilbane Building Company / AKF Group LLC / Officeworks / HLB Lighting / Teknion / Hightower Group / Milliken Carpet / Interface / Axis Lighting



THE BOSTON FOUNDATION

SGA / A/E/C Solutions / Elaine Construction / RDK Engineers / Armstrong / Shaw Contract / Reflex Lighting / W.B. Mason



INDIGO

PERKINS+WILL / Siena Construction / AHA Engineers / MacNamara Salvia / Creative Office Pavilion-Furniture / Code Red / 3form / Forms + Surfaces / Patcraft / Siena-Engineered Wood / Camira-Fabrics



UPPABABY CORPORATE HEADQUARTERS

BERGMEYER ASSOCIATES, INC. / Commercial Construction Consulting, Inc. / Archimedia Solutions Group, LLC / Khalin Associates, Inc. / Zintra Acoustic Solutions / Allsteel / Shaw Contract / Longleaf Lumber



MACMILLAN LEARNING

UNISPACE / BALA/TMP (formerly TMP Consulting Engineers, Inc.) / Herman Miller / J&J Flooring Group / Benhar Office Interiors / Fabrizio Corp.



MICROSOFT SALES, MARKETING, AND SERVICES GROUP

SASAKI / Jones Lang LaSalle / Lee Kennedy / Horton Lees Brogden Lighting Design (HLB) / BuroHappold / Knoll / Shaw Contract / Maharam / 9Wood



RED HAT BOSTON

IA INTERIOR ARCHITECTS / Simpson Gumpertz & Heger / Acentech Colliers / Structure Tone / Downstream / Officeworks / PIONEER MILLWORKS / Interface / Steelcase

Category

WORKSPACE 20,000 - 80,000sf



VMWARE

UNISPACE / Structure Tone / WB Engineers + Consultants / Sladen Feinstein Lighting Consultant / Flora Explora / SignWorks Group / Millwork One / Creative Office Pavilion / Business Interior Floors / FiltzFelt



MIMECAST

LDESIGN / AHA Engineers / DREAM Collaborative / Whiting Turner / Erland Construction / RPB Office / Red Thread / Ideal Office Furniture / Exposure / Kaswell Flooring / Division 9 Collaborative



GLOBOFORCE

VISNICK & CAULFIELD ASSOCIATES / Vanderweil Engineers / J. Calnan & Associates / T3 Advisors / Creative Office Pavilion / Reflex Lighting / FiltzFelt / Milliken Carpet / Benjamin Moore / Armstrong Ceilings / Enwork



PROJECT SAGAMORE

ELLENZWEIG / Bard, Rao + Athanas Consulting Engineers / Le Messurier / INTEC Group / JLL Construction / BSC Group / Red Thread / Steelcase / Teknion / ESS Lighting



TAKEDA PHARMACEUTICALS

FUSION DESIGN CONSULTANTS, INC. / J. Calnan & Associates / Milliken Carpet / Red Thread / Shaw Contract / Reflex Lighting



AMERICA'S TEST KITCHEN RELOCATION

PACKARD DESIGN / Crabtree & McGrath / AHA Engineers / Lee Kennedy / CBRE / WSDG / Creative Office Pavilion / Shaw Contract / Illuminate Vanguard / DGI Invisuals / Savannah: Millwork, Fabrication and Stone



IDEO CAMBRIDGE

HACIN + ASSOCIATES / Ryan Iron Works / Young's Woodworking / IDEO Cambridge / Corderman Construction / Sladen Feinstein / Heartworks / Muuto / Hay / BluDot / Norman Copenhagen

- 10 ENTRIES -



WORKSPACE

OVER 80,000SF

Category

WORKSPACE OVER 80,000sf



BIOVERATIV

SGA / J. Calnan & Associates / RW Sullivan Engineering / Red Thread / Reflex Lighting / Interface



CISCO

NELSON / Shaw Contract / Architex / Skyline / Sherwin Williams / Delray



NATIXIS

CBT / STV/DPM / Turner Construction / Vanderweil Engineers / LAM Partners / Office Resources / Davis Furniture / Knoll / Bentley Mills / Designtex / Transwall



BLUEPRINT MEDICINES HEADQUARTERS RELOCATION

TRIA / The Richmond Group / AHA Engineers / MacNamara Salvia / Office Resources / Reflex Lighting / New England Lab / Milliken Carpet / Knoll / Signs on Site



WOLVERINE WORLDWIDE

SASAKI / Commodore Builders / Cushman & Wakefield / RDK Engineers / Simpson Gumpertz & Heger / Horton Lees Brogden Lighting Design / Steelcase / Mohawk Group / 9Wood



HOUGHTON MIFFLIN HARCOURT

VISNICK & CAULFIELD ASSOCIATES / Structure Tone / RDK Engineers / Reflex Lighting / Officeworks / Motiv / Teknion / Tandus Centiva / Newmat Stretch Ceiling Systems / Siena Flooring Solutions / Infinium Architectural Wall Systems



KRONOS HEADQUARTERS RELOCATION

PACKARD DESIGN / Cushman & Wakefield / J. Calnan & Associates / WB Engineers + Consultants / Northstar Project & Real Estate Services / ACT Associates LLC / Environments at Work / Allsteel / Illuminate Vanguard / Shaw Contract / Haworth



CLARKS AMERICAS

STANTEC ARCHITECTURE INC. / RDK Engineers / Odeh Engineers / Lam Partners / Timberline Construction Corporation / Spagnolo Gisness & Associates / Allegheny Contract / Mohawk / Office Resources / Knoll / Reflex Lighting

Category

WORKSPACE OVER 80,000sf



ABIOMED HEADQUARTERS

STANTEC ARCHITECTURE INC. / Cianbro Corporation / Stantec Consulting Services Inc. / Stantec Planning and Landscape Architecture P.C. / Simpson Gumpertz & Heger / Acentech / Creative Office Pavilion / Best Tile / Tandus Centiva / Maharam / ModularArt



REEBOK HEADQUARTERS

GENSLER / Acentech / LAM Partners / WB Engineers + Consultants / Gilbane Building Company / Code Red / Interface / Knoll / Armstrong / Office Resources / Lorimer Studios

- 6 ENTRIES -





NEW CATEGORY FOR 2018

WORKSPACE ON A BUDGET

Category

WORKSPACE ON A BUDGET



WHOLE FOODS

JACOBS / Cavanaugh Tocchi Associates, Inc. / Kalin Associates / Construction Management & Builders Inc. / Atlantic Management / Verrex / Baynes Lighting / Armstrong / J & J Invision / Knoll / Forbo / Mannington



PAYTRONIX

ACTWO ARCHITECTS / Vincent Dilorio Inc. / Mohawk Group / Luice Diversified Inc.



CALIFORNIA CLOSETS CORPORATE OFFICE

BERGMEYER ASSOCIATES, INC. / CB2 Builders / Commercial Construction Consulting, Inc. / KL Structures Group / Haworth / Shaw Contract / Armstrong / Benjamin Moore / Pinnacle Architectural Lighting



TRUE FIT CORPORATION

DYER BROWN ARCHITECTS / JDL Corporate Interiors / C3 Engineers / MacNamara Salvia / Oxford Properties Group / Shaw Contract / Interface / Illuminate / Porter Barn Wood / Strategic Spaces



EASTERSEALS NEW HAMPSHIRE

STIBLER ASSOCIATES / Cornerstone PDC /
SMP Architecture / BrandIt



CATALANT

GENSLER / Vanderweil Engineers / Corderman &
Company / Business Interior Floors / Integrated
Interiors / Young's Woodworking / Brian T. Malone
Painting Co.

SAVE THE DATE AND MARK YOUR CALENDARS TODAY!

VISIT IIDANE.ORG FOR MORE INFORMATION

HARTFORD CITY CENTER:

SPRING FLING MIXOLOGY

Wednesday, March 21, 2018

Hartford Flavor Company
30 Arbor Street
Hartford, CT 06106

GREENRI

Thursday, May 03, 2018

Roger Williams Botanical Garden
1000 Elmwood Avenue
Providence, RI 02905

**BUSINESS LEADERS
BREAKFAST**

Thursday, May 24, 2018

The Westin Boston Waterfront
425 Summer Street
Boston, MA 02210

**HARTFORD CITY
CENTER CLAMBAKE**

Thursday, June 07, 2018

ART UNCORKED 2018

Thursday, July 19, 2018

**15TH ANNUAL
CROQUET TOURNAMENT**

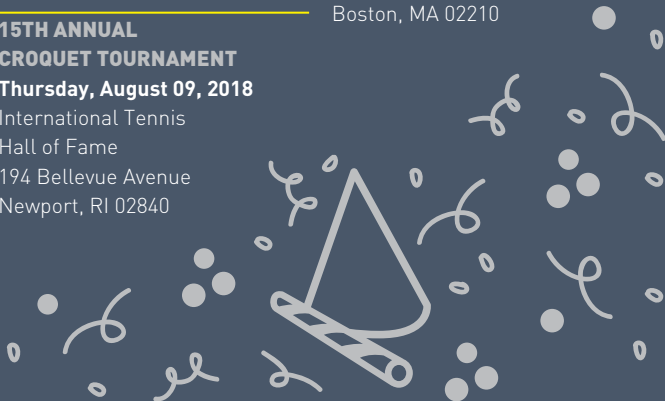
Thursday, August 09, 2018

International Tennis
Hall of Fame
194 Bellevue Avenue
Newport, RI 02840

**20TH ANNUAL
FASHION SHOW**

Thursday, October 18, 2018

Boston Convention and
Exhibition Center
415 Summer Street
Boston, MA 02210





SAVE THE DATE

5.24.18

CHARITY BENEFICIARY
ARTLIFTING



FOLLOW US AT [#iidaneblb](#)
FOR SPECIAL ANNOUNCEMENTS

